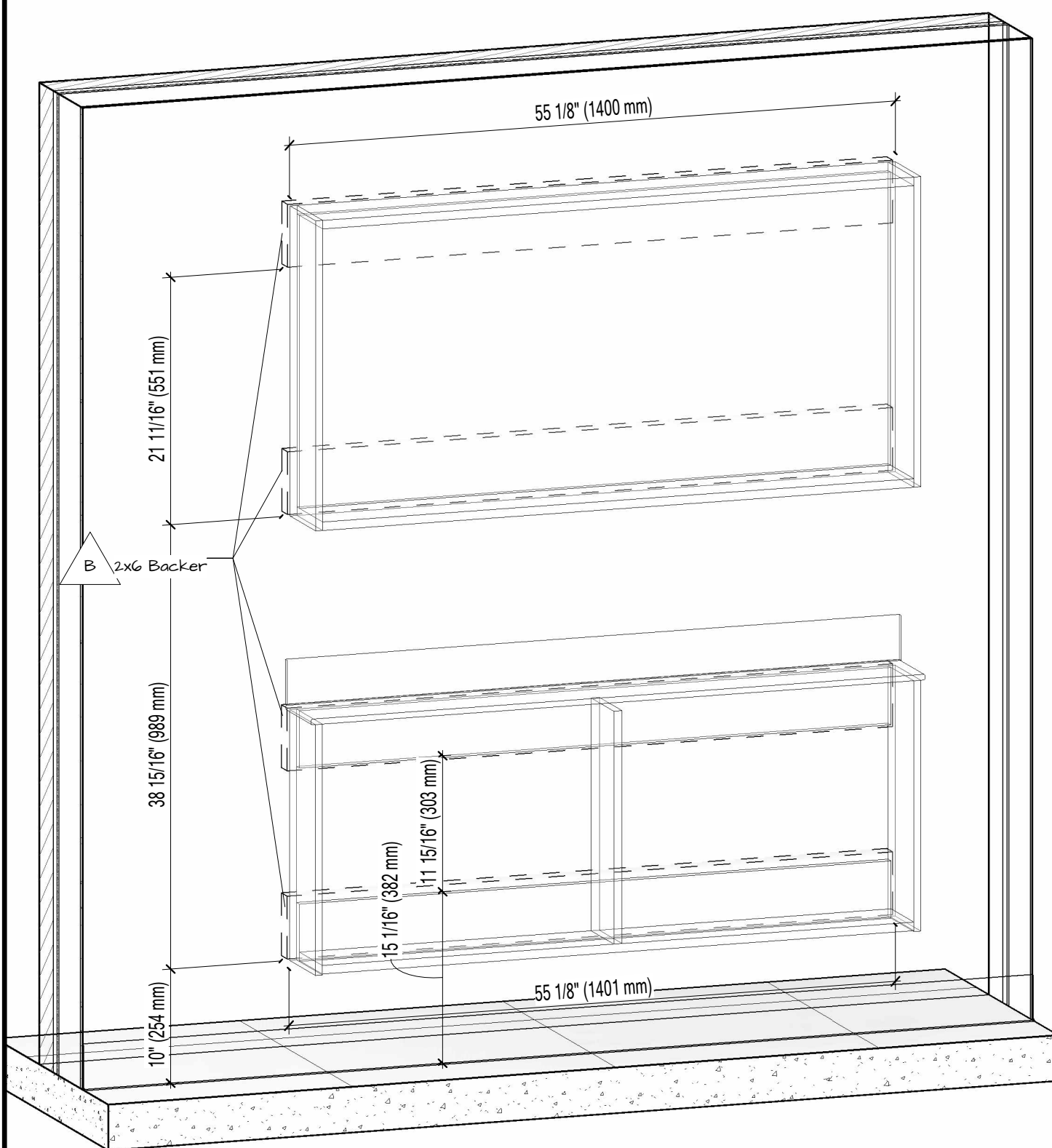


Packing List			
Mark	Model	Description	Qty
		Screws	12
BI	B33	TX console Left & Right Drawers	1
CI	B33s	Work Surface	1
PI		Door/Drawer Pull	10
UI	U31	Upper Dispense Cabinet	1

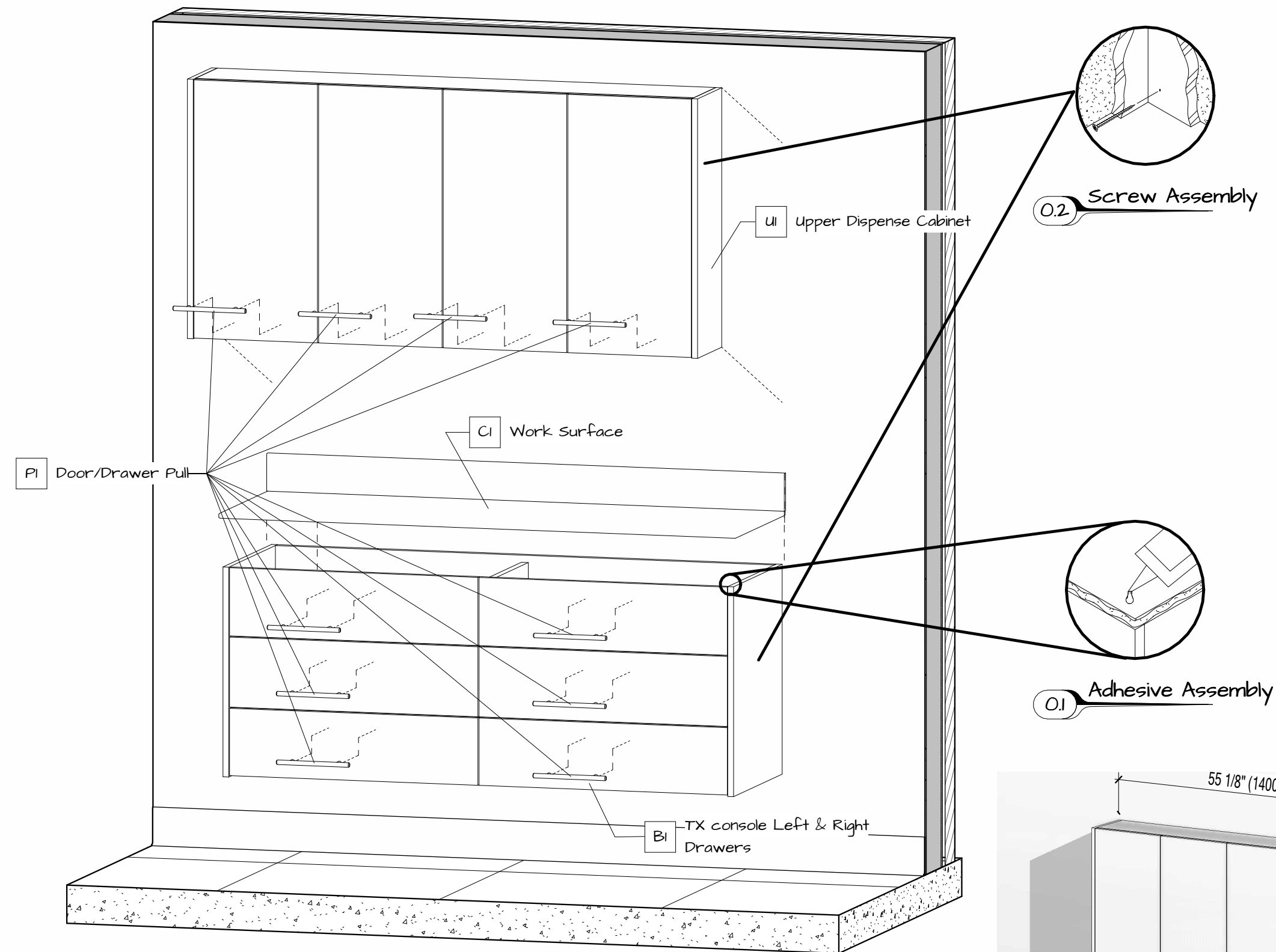
Backers	
Description	Length
2x6 Backer	4' - 7 3/32"
2x6 Backer	4' - 7 3/32"
2x6 Backer	4' - 7 5/32"
2x6 Backer	4' - 7 5/32"

Utilities		
Mark	Description	Qty

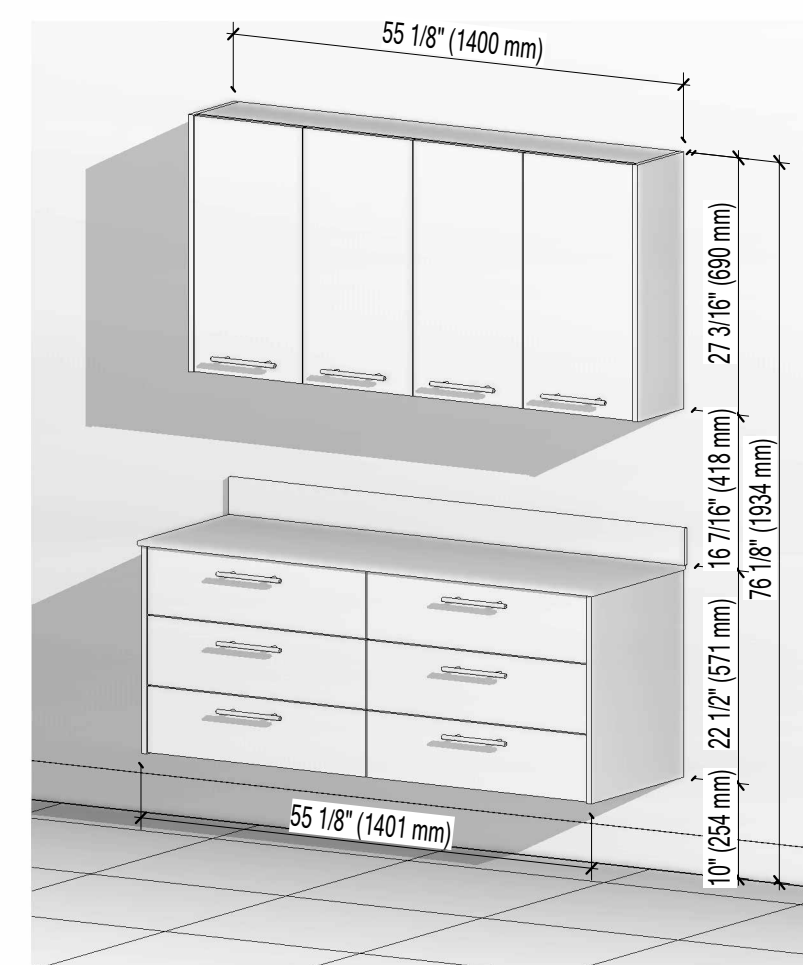
18' - 4 1/2"



1 Utilities Location



2 Front Install



3 Final Installation View



NOVA Solutions Inc.  
217-342-7070  
sales@novasolutionsinc.com

Installation Drawing	
Title	ALSTC B33-H00-U35
Date	05/05/2024
Drawn by	Justin Martin