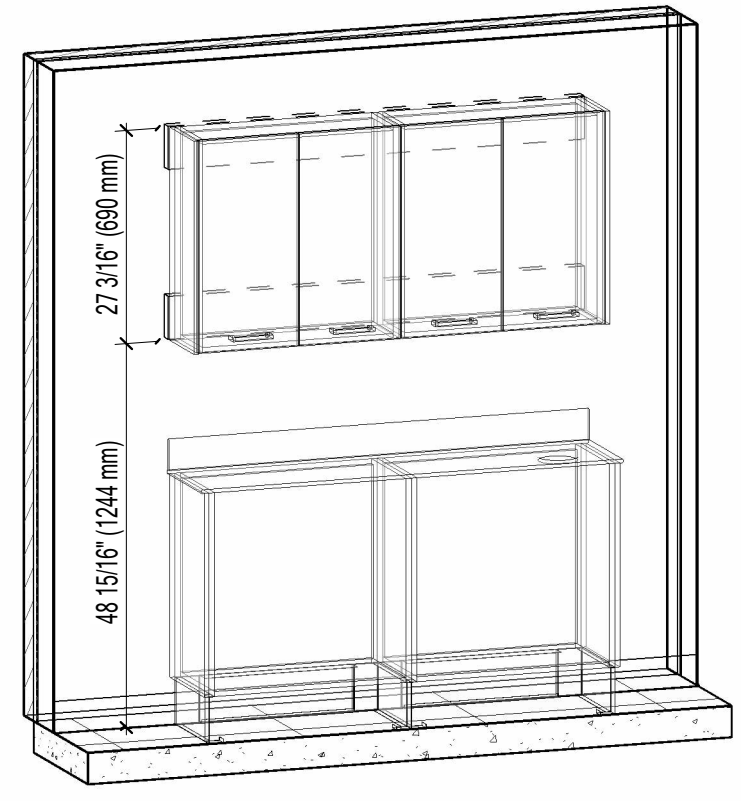
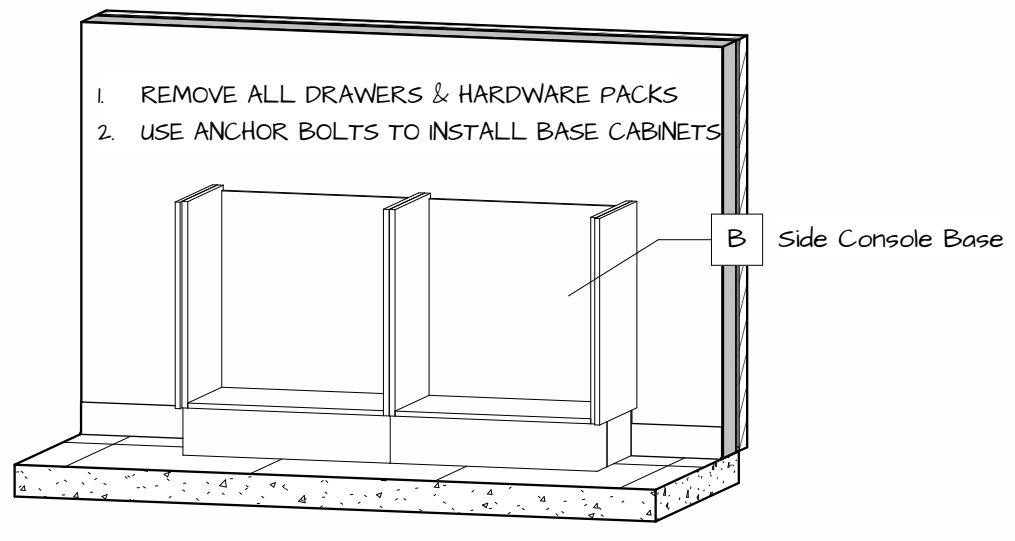


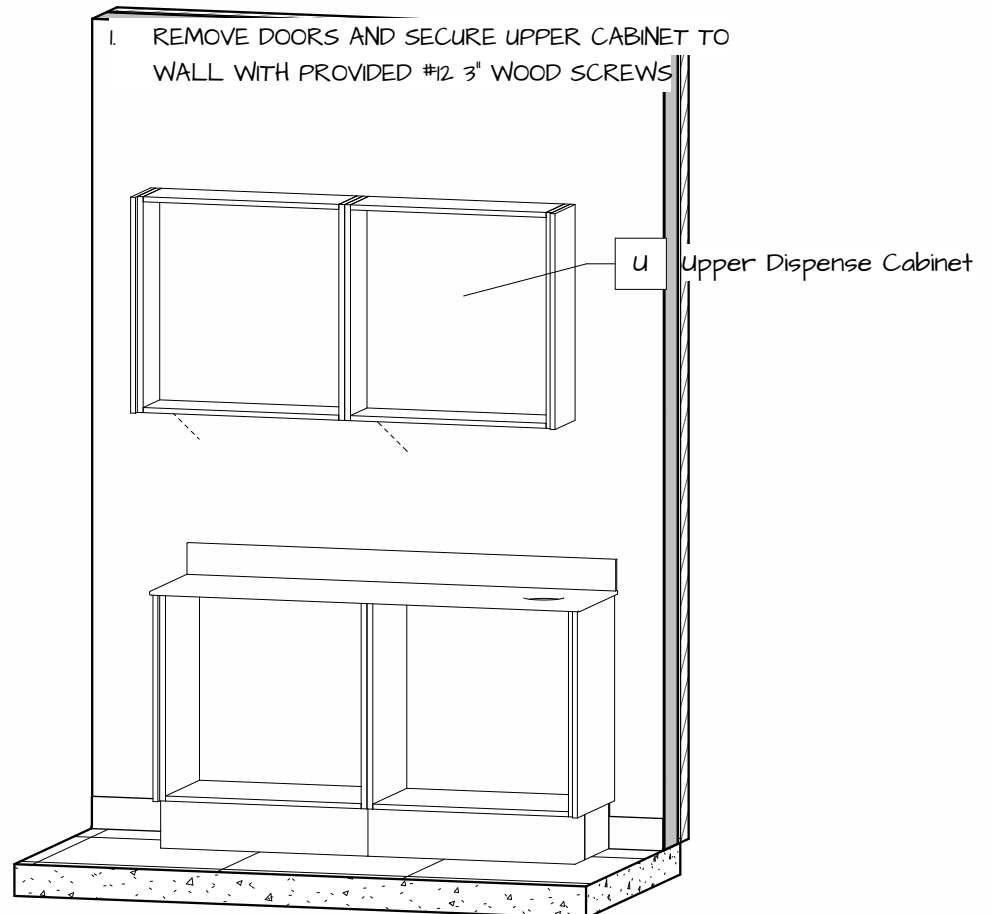
| Backers     |              |
|-------------|--------------|
| Description | Length       |
| 2x6 Backer  | 4' - 7 1/8"  |
| 2x6 Backer  | 4' - 7 1/8"  |
|             | 9' - 2 9/32" |



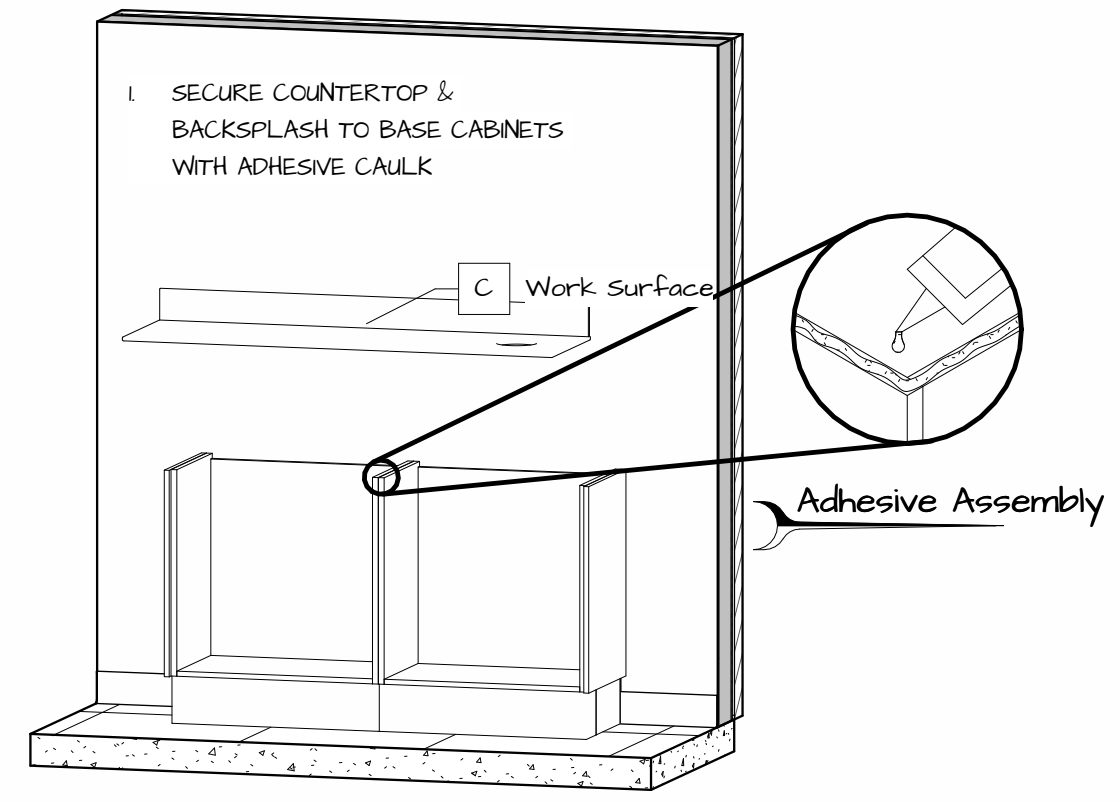
1 Utilities Location



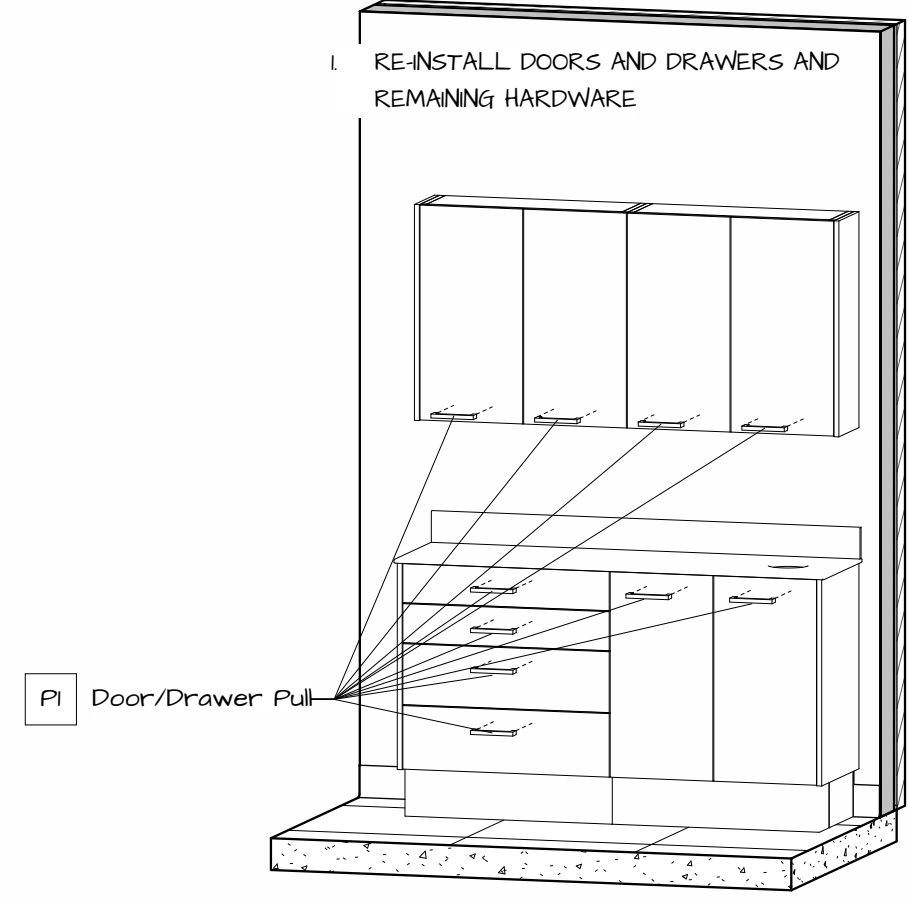
2.1 Install Base Cabinets



2.3 Install Upper Cabinets

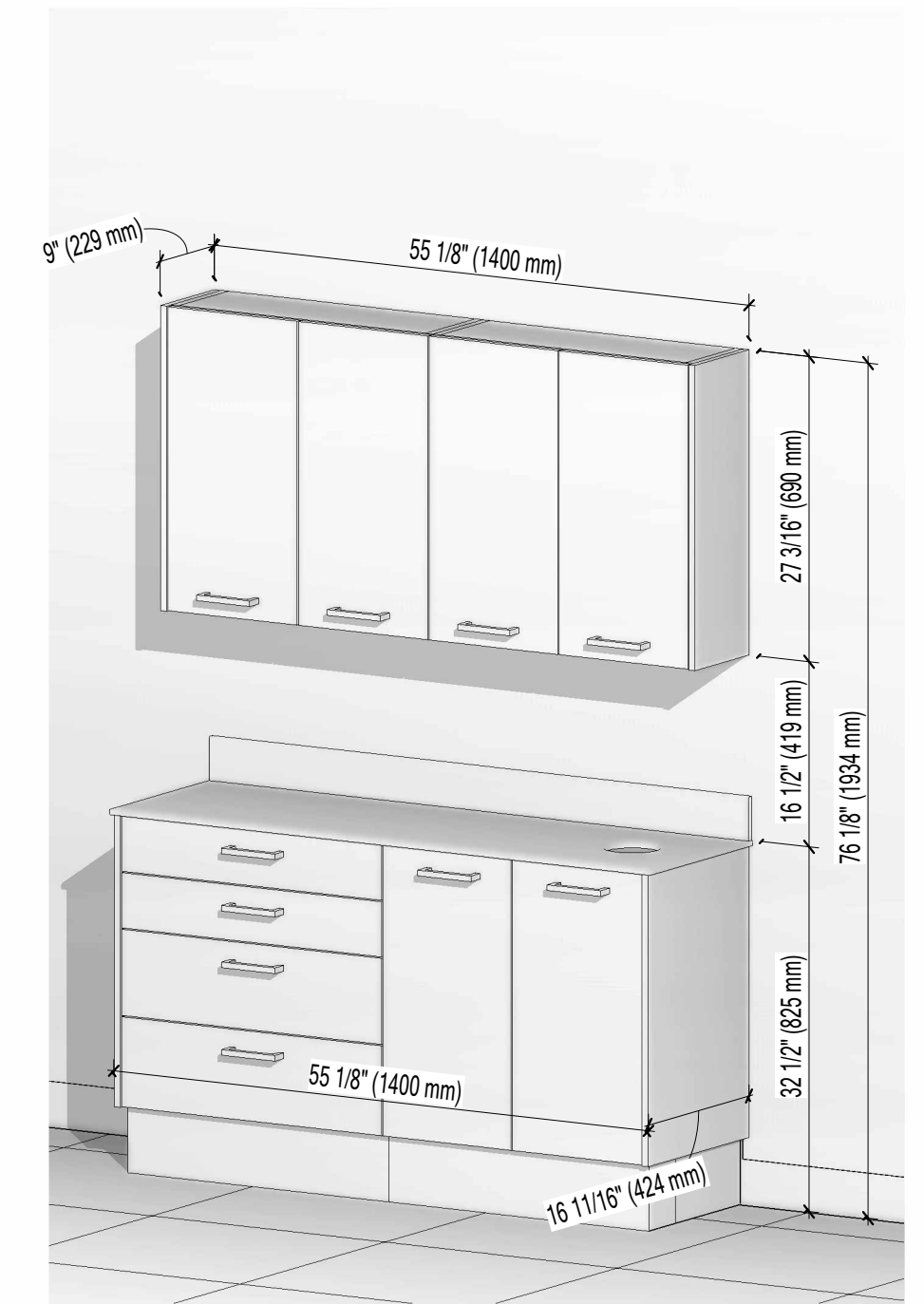


2.2 Install CounterTop



2.4 Install Hardware

| Packing List |                        |     |
|--------------|------------------------|-----|
| Mark         | Description            | Qty |
|              | #12 3" Wood Screws     | 6   |
|              | Anchor Bolts           | 8   |
|              | Tube of Caulk          | 1   |
| B            | Side Console Base      | 1   |
| C            | Work Surface           | 1   |
| P1           | Door/Drawer Pull       | 10  |
| U            | Upper Dispense Cabinet | 1   |



3 Final Installation View



| Installation Drawing |                       | Prepared For: NOVA Solutions Inc. |
|----------------------|-----------------------|-----------------------------------|
| <b>LINEA</b>         |                       |                                   |
| Project              | SIDE TREATMENT CENTER | <b>I-1</b>                        |
| Item #               | ALSTC 03H-000-U35     |                                   |
| Drawn by:            | Justin Martin         | 09/09/24                          |
|                      |                       | Rev. 1                            |