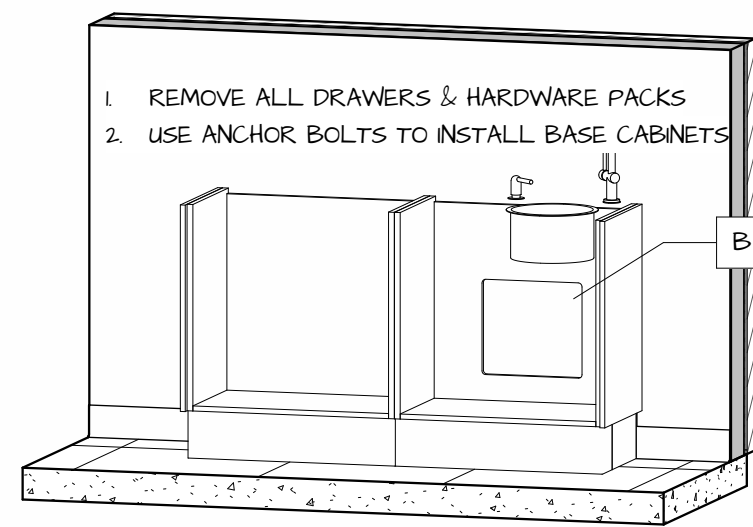


Plumbing Utilities		
Mark	Description	Qty
H	Hot Water Supply	1
C	Cold Water Supply	1
D	Sanitary DWV	1

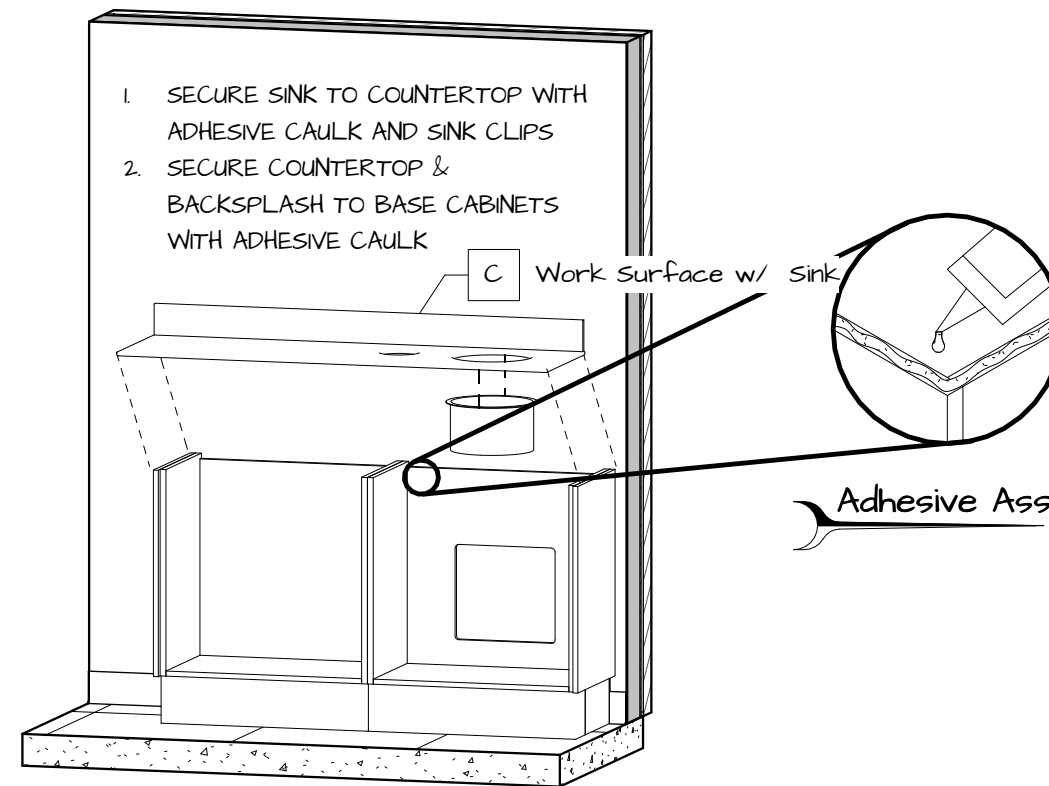
1 Utilities Location



1. REMOVE ALL DRAWERS & HARDWARE PACKS
2. USE ANCHOR BOLTS TO INSTALL BASE CABINETS

B Side Console Base

2.1 Install Base Cabinets

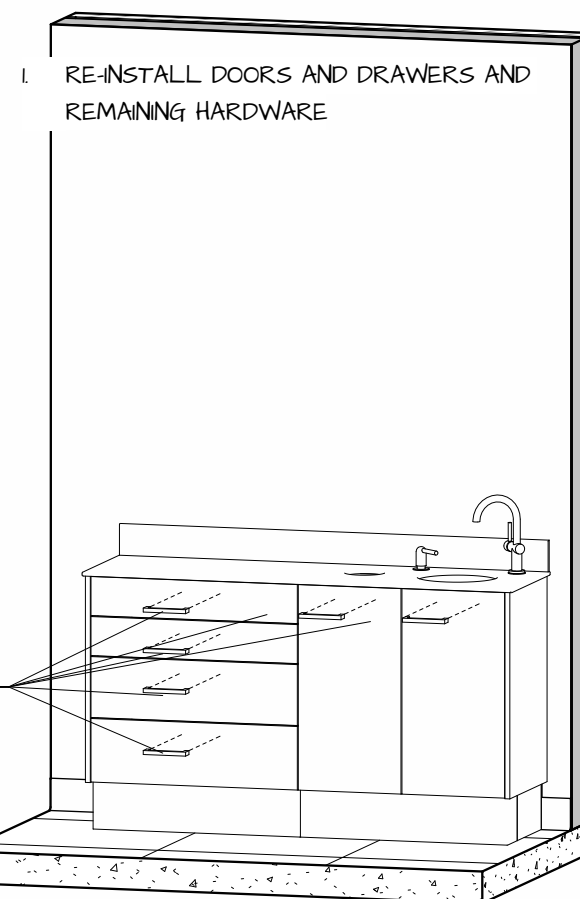


1. SECURE SINK TO COUNTERTOP WITH ADHESIVE CAULK AND SINK CLIPS
2. SECURE COUNTERTOP & BACKSPLASH TO BASE CABINETS WITH ADHESIVE CAULK

C Work Surface w/ Sink

Adhesive Assembly

2.2 Install CounterTop

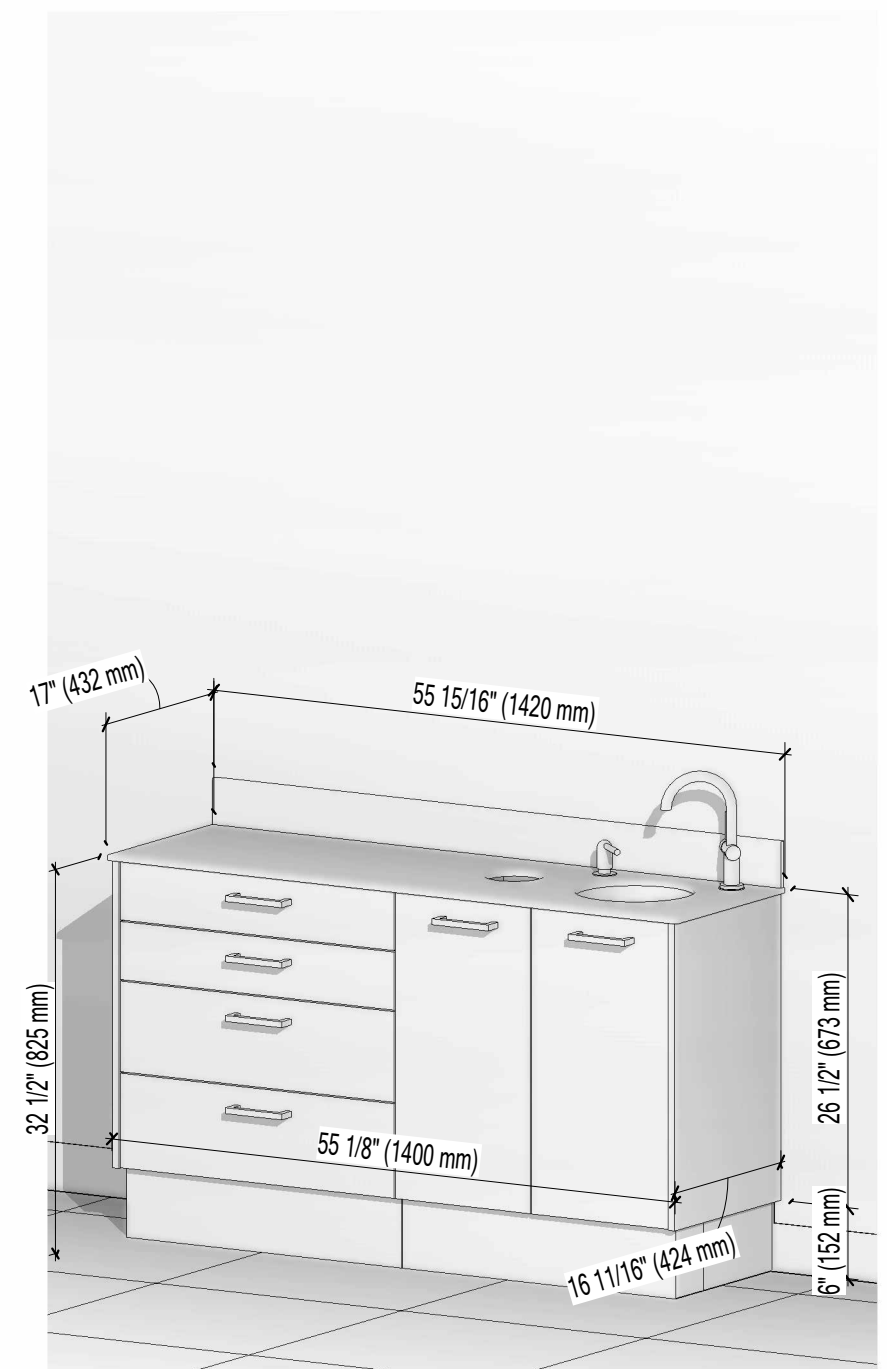


1. RE-INSTALL DOORS AND DRAWERS AND REMAINING HARDWARE

PI Door/Drawer Pull

2.3 Install Hardware

Packing List		
Mark	Description	Qty
	Anchor Bolts	8
	Sink	1
	Strainer	1
	Tube of Caulk	1
B	Side Console Base	1
C	Work Surface w/ Sink	1
F	Faucet	1
PI	Door/Drawer Pull	6
S	Soap Dispenser	1



3 Final Installation View

17" (432 mm)
 55 15/16" (1420 mm)
 32 1/2" (825 mm)
 55 1/8" (1400 mm)
 26 1/2" (673 mm)
 6" (152 mm)
 16 11/16" (424 mm)



Installation Drawing		Prepared For: NOVA Solutions Inc.
LINEA		
Project	SIDE TREATMENT CENTER	
Item #	ALSTC 03F-000-U00	
Drawn by: Justin Martin	09/09/24	Rev. 1