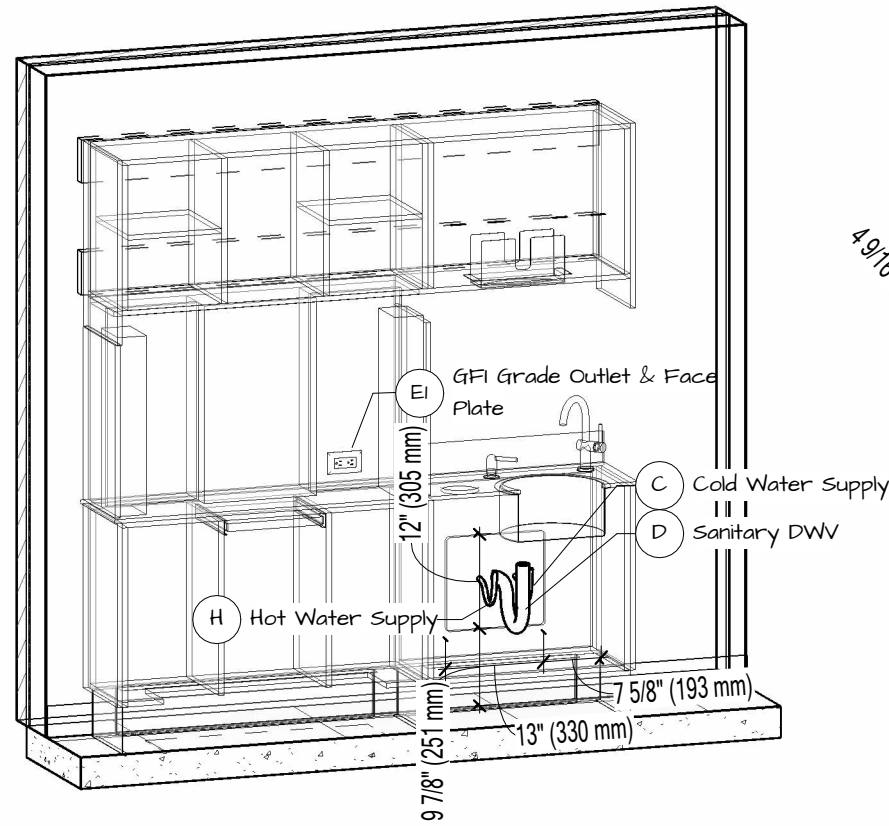
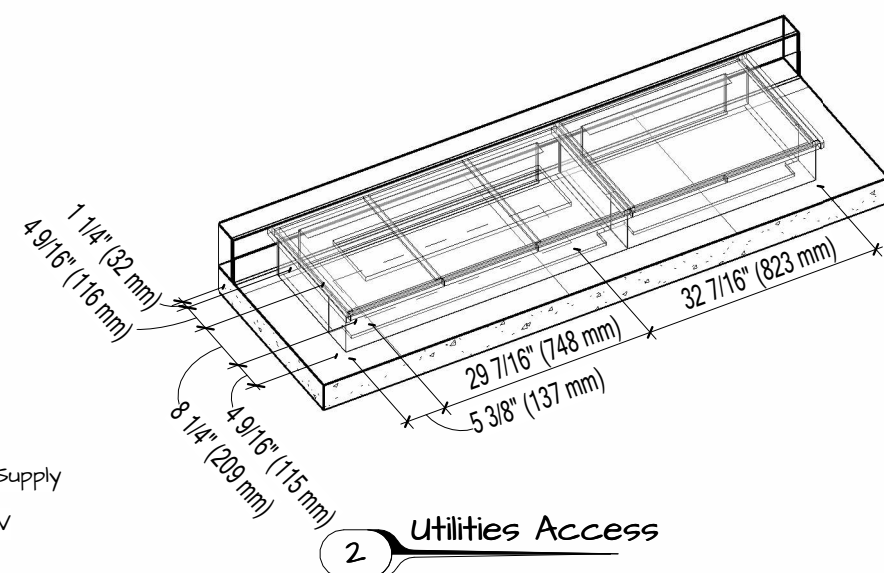


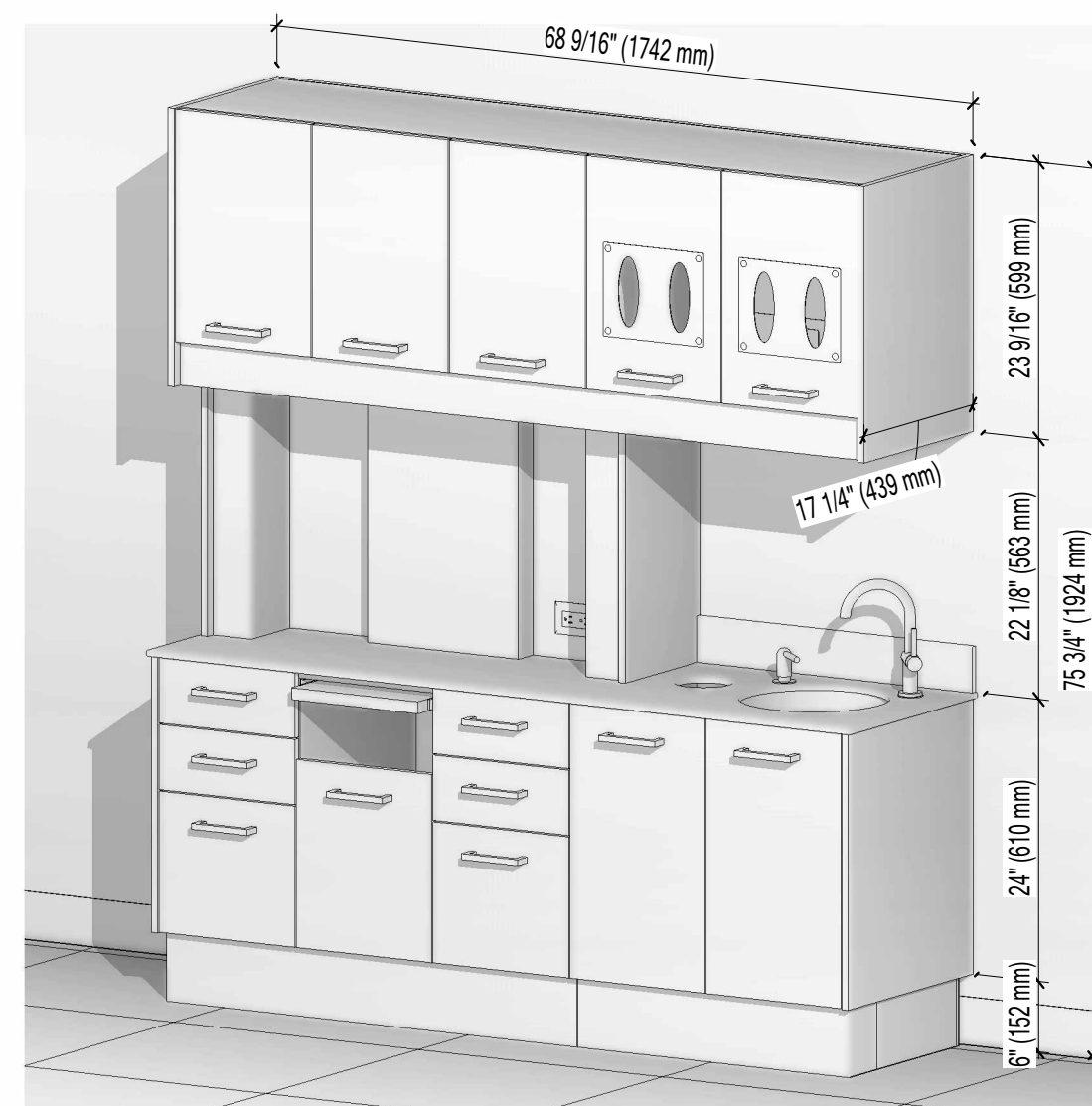
Backers		Electrical Utilities			Plumbing Utilities		
Description	Length	Mark	Description	Qty	Mark	Description	Qty
2x6 Backer	5' - 8 19/32"	EI	GFI Grade Outlet & Face Plate	1	H	Hot Water Supply	1
2x6 Backer	5' - 8 19/32"				C	Cold Water Supply	1
	1" - 5 5/32"				D	Sanitary DWV	1



1 Utilities Location

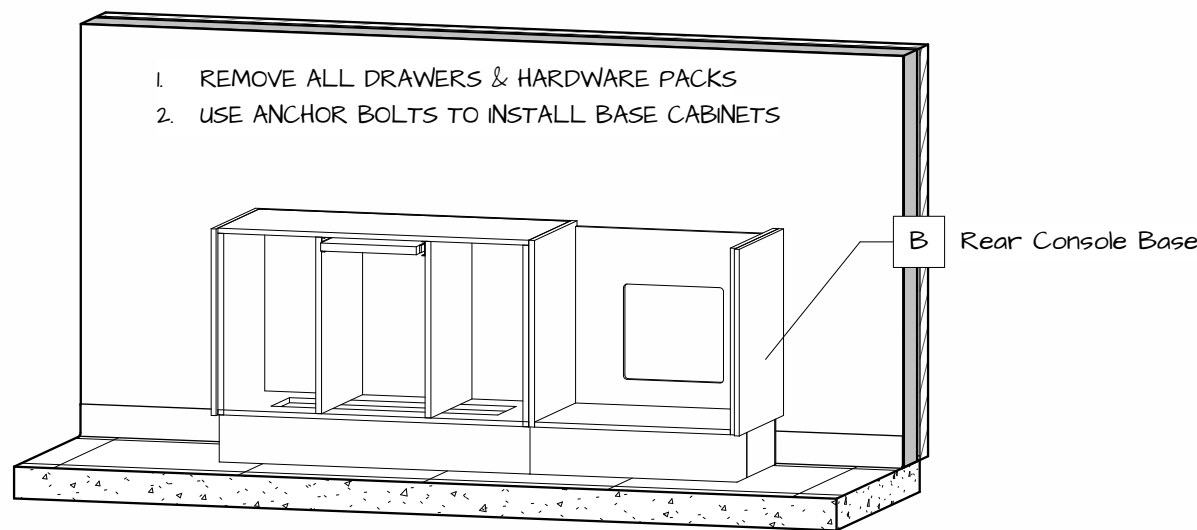


2 Utilities Access

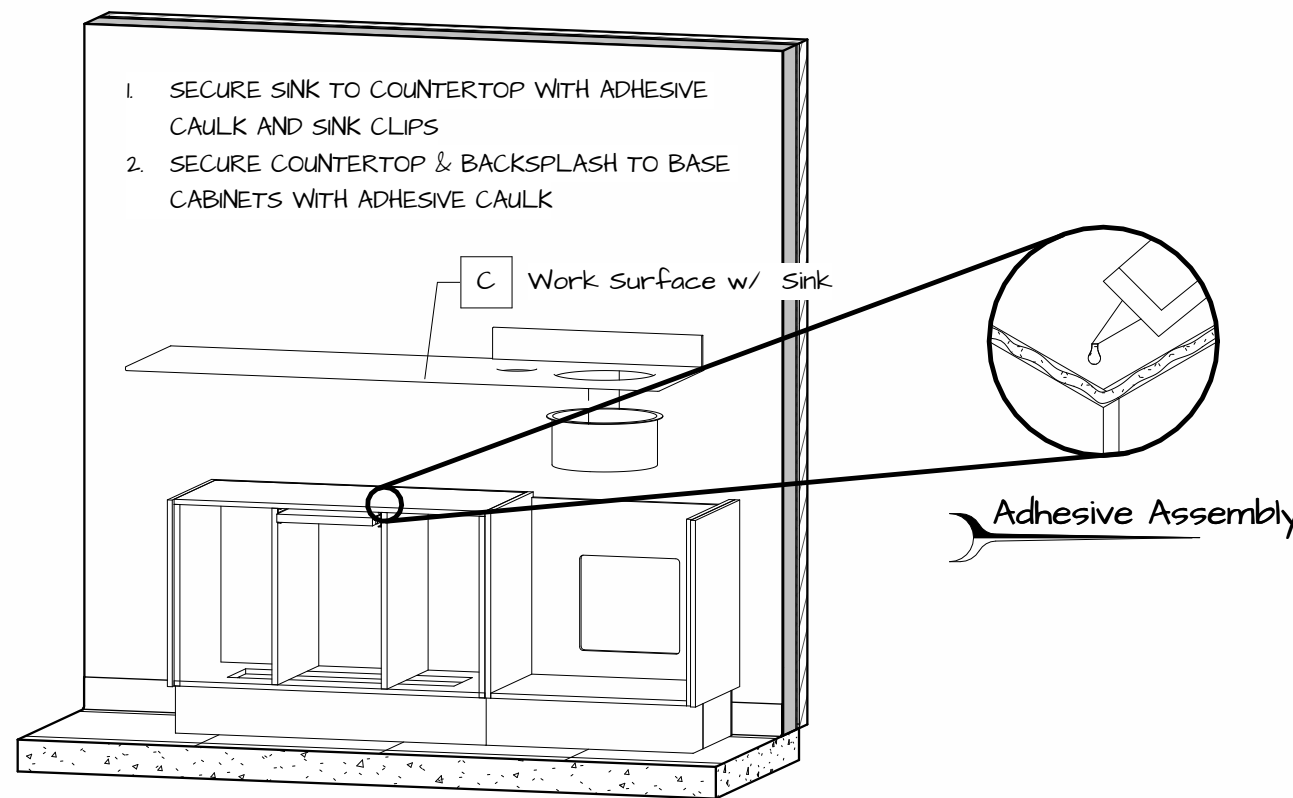


3 Final Installation View

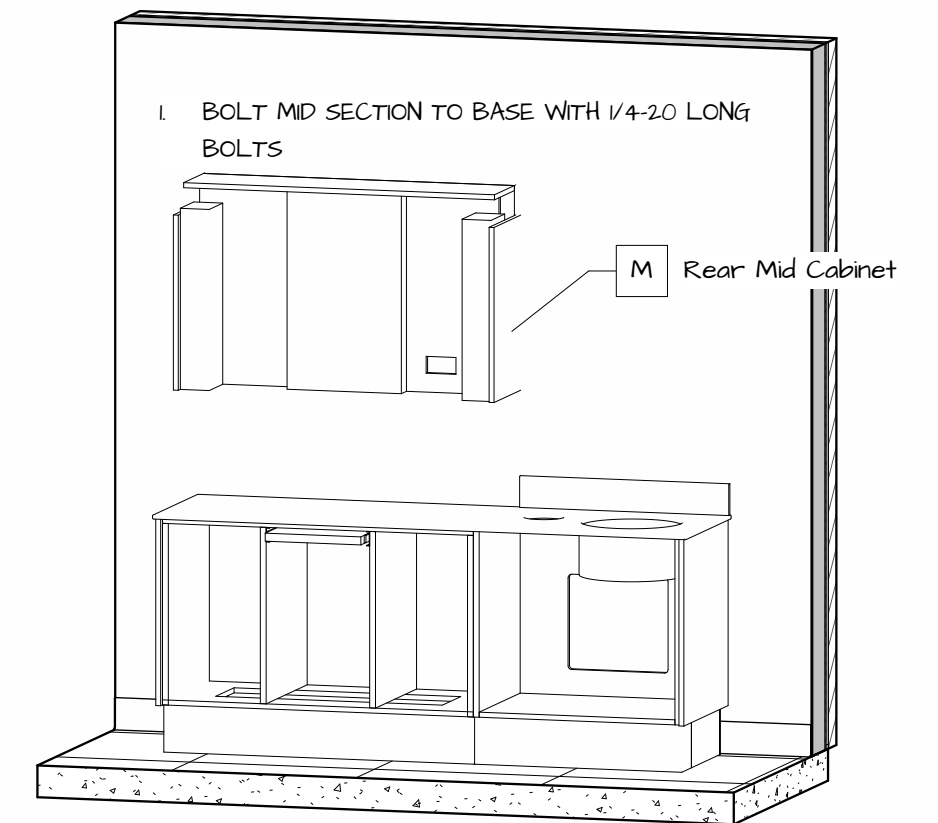
Packing List		
Mark	Description	Qty
	#2 3" Wood Screws	4
	1/4"-20 Long Bolts	4
	1/4"-20 Short Bolts	6
	12v Power Supply	1
	Anchor Bolts	8
	Sink	1
	Strainer	1
	Tube of Caulk	1
B	Rear Console Base	1
C	Work Surface w/ Sink	1
F	Faucet	1
M	Rear Mid Cabinet	1
PI	Door/Drawer Pull	14
S	Soap Dispenser	1
U	Upper Dispense Cabinet	1



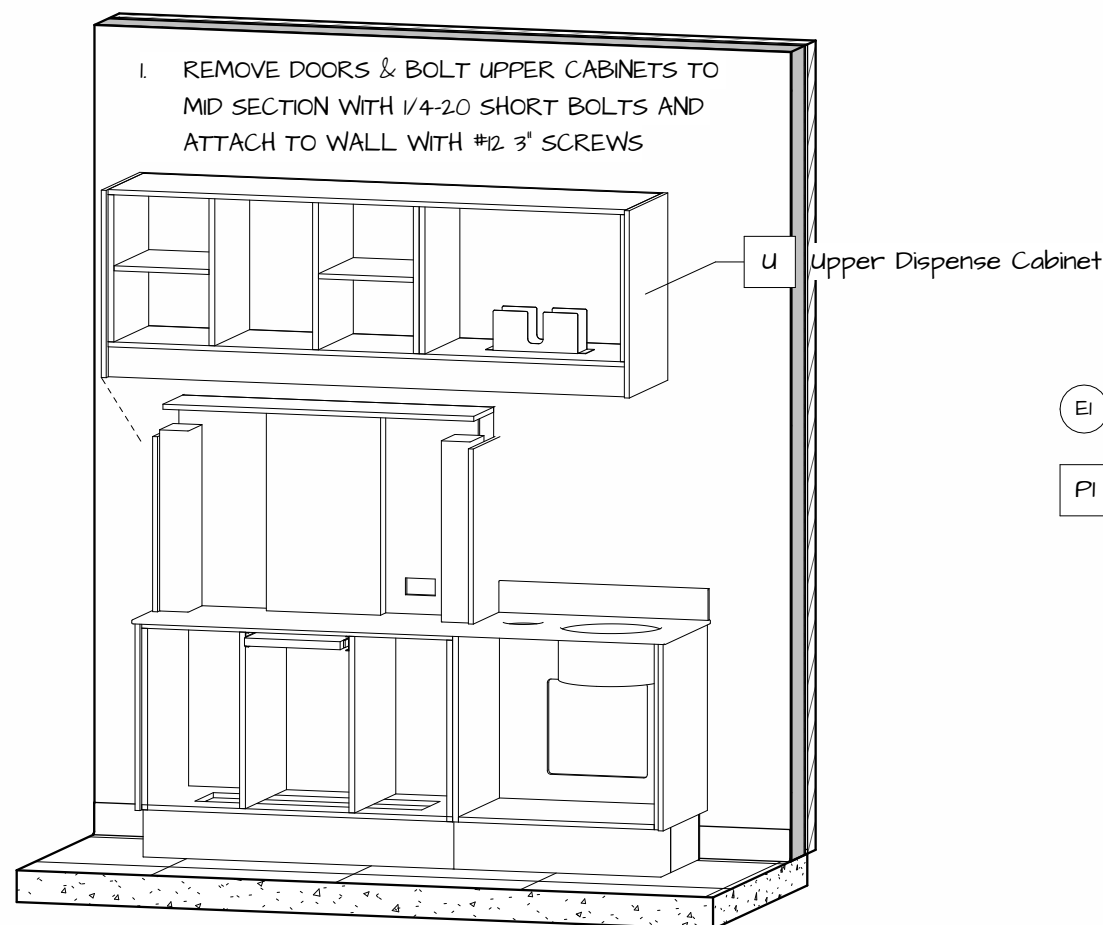
2.1 Install Base Cabinets



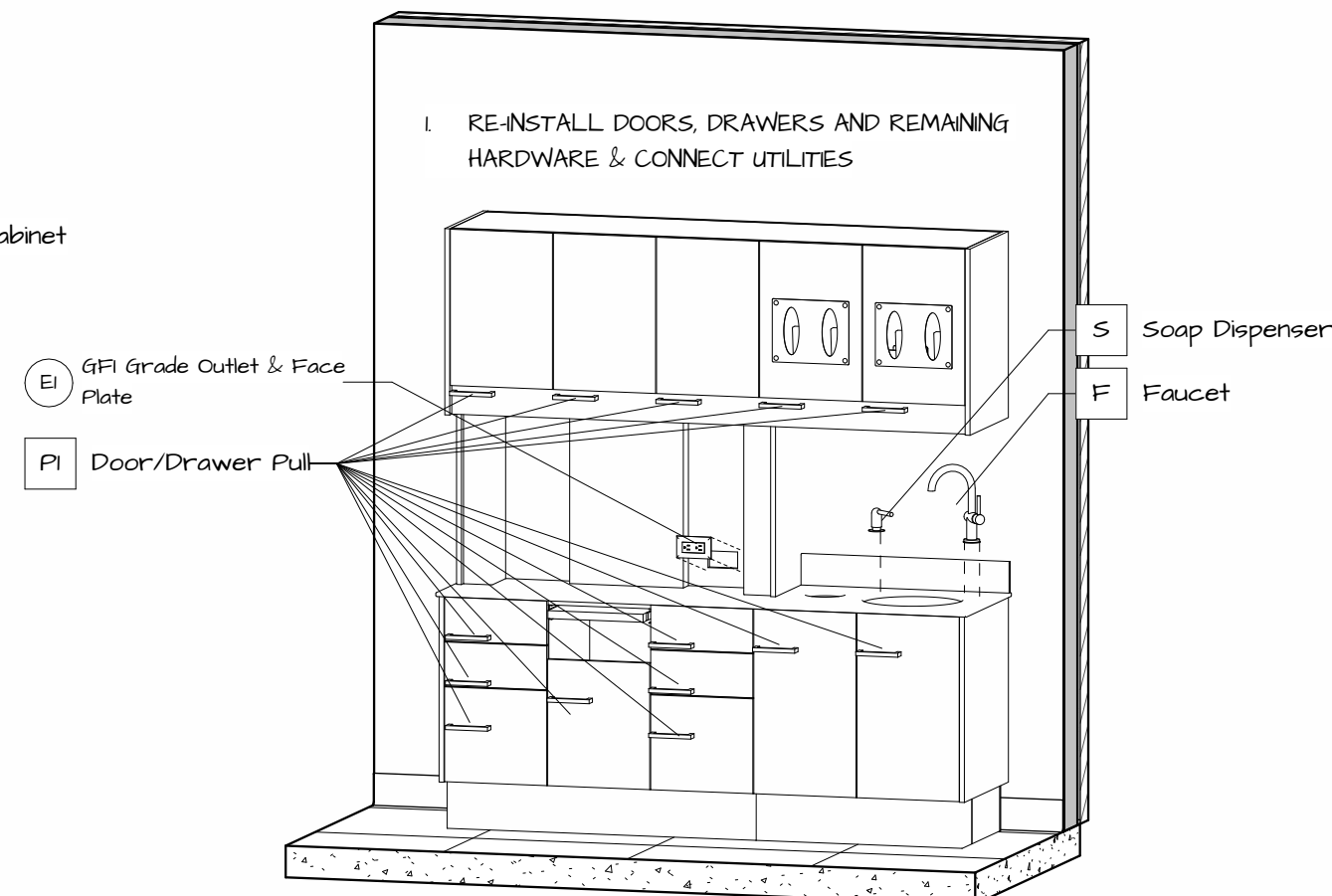
2.2 Install CounterTop



2.3 Install Mid Section



2.4 Install Upper Cabinets



2.5 Install Hardware

**anthos**  
NOVA Solutions Inc.  
217-342-7070  
sales@novasolutionsinc.com

Installation Drawing		Prepared For: NOVA Solutions Inc.
<b>LINEA</b>		
Project	REAR TREATMENT CENTER	<b>I-1</b>
Item #	ALRTC B21-H11-U21	
Drawn by:	Justin Martin	09/21/24
		Rev. 1